

# ADAMS

GREY - EASTLEGON HILLS



# ALL NEW ADAMS GREY



*Discover True Comfort*

*Adams Grey is a peaceful residential development made up of 20 units of 3 & 4 bedroom townhouses located in the central part of East Legon Hills. An ideal home for corporate executives and business owners who admire exclusive neighbourhoods and a perfect environment to raise their families. This elegant development can boast of a swimming pool for all residents, a green and serene environment, back-up power & water supply, modern installations and self compound units. This project is scheduled for completion by December, 2021.*

### **Interior Features**

- 1. Panelled / Flush doors with hardware*
- 2. Recessed ceiling lighting*
- 3. Fitted Wardrobes*
- 4. Air conditioning units*
- 5. DSTV connection*
- 6. Fully Fitted Kitchens with Appliances; Refrigerator, Cooker Unit & Extractor, Oven, Microwave and Washing Machine.*
- 8. Bathrooms with porcelain tiles.*
- 9. Metal Balustrades*

### **Exterior Features**

- 1. Gated Development*
- 2. 24-hour Security*
- 3. Backup Water & Power Supply*
- 4. Electric Security Fencing*
- 5. Property Management*
- 6. Car Parking*
- 8. Fire Protection and Safety System*
- 9. Swimming pool*



*Discover True Comfort*

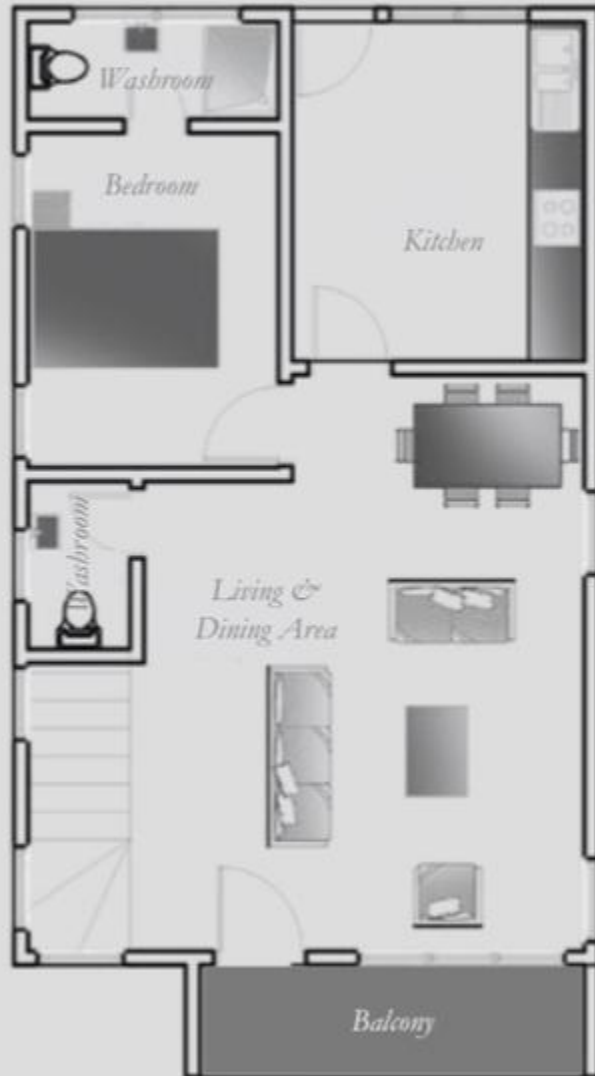


# **3&4 BEDROOM TOWNHOUSES**

FLOOR PLANS AND PRICING

**ADAMS GREY**

# 3 Bedroom Standard | TYPE A



GROUND FLOOR

## SPACES

## AREA(sqm)

*Living & Dining Area* 28sqm

*Balconies(2)* 4sqm

*Washrooms(4)* 6sqm

*Master Bedroom* 20sqm

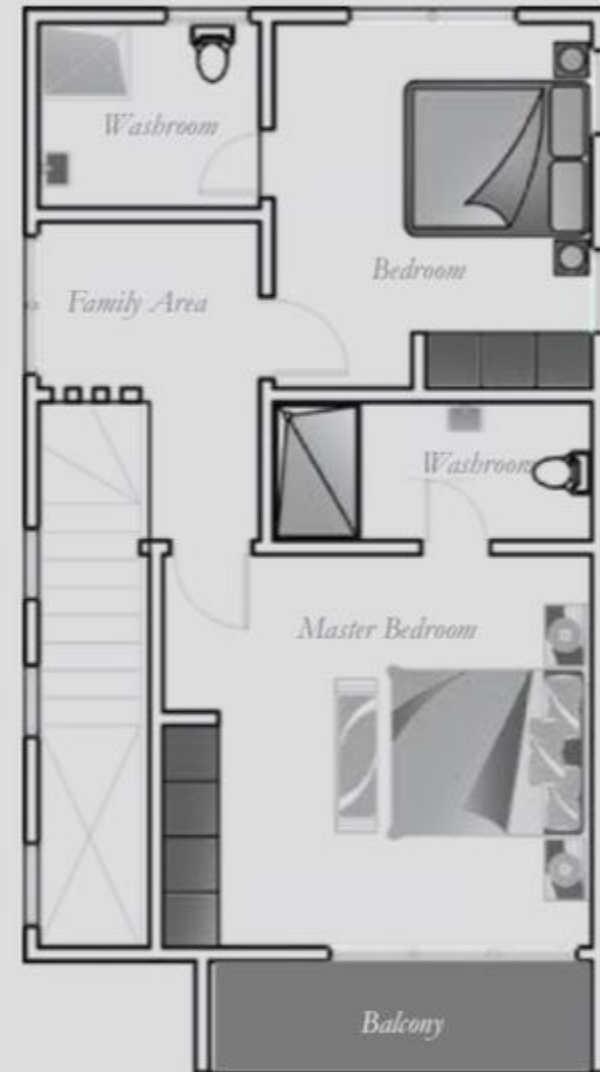
*Other Bedrooms(2)* 14sqm

*Kitchen* 12sqm

*Family Area* 5sqm

**Gross Area** 145sqm

**Price** \$150k

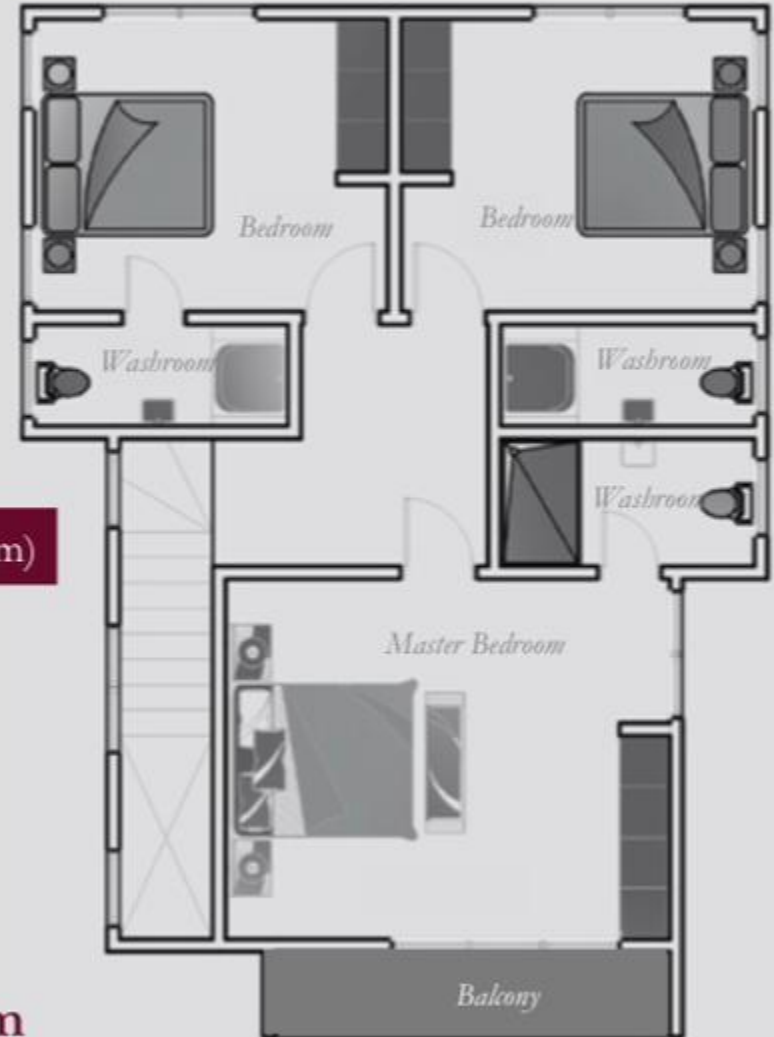


FIRST FLOOR

## 3.5 Bedroom Regular | TYPE B



GROUND FLOOR



FIRST FLOOR

SPACES	AREA(sqm)
Living & Dining Area	36sqm
Balconies(2)	6sqm
Washrooms(5)	6sqm
Master Bedroom	22sqm
Other Bedrooms(2)	15sqm
Kitchen	14sqm
Boys Quarters	10sqm
<b>Gross Area</b>	<b>175sqm</b>
<b>Price</b>	<b>\$200k</b>



*Discover True Comfort*





# PROJECTED FLOOR PLAN

TYPE C & D

ADAMS GREY

GROUND FLOOR

TYPE C



FIRST FLOOR

TYPE C



GROUND FLOOR

TYPE D



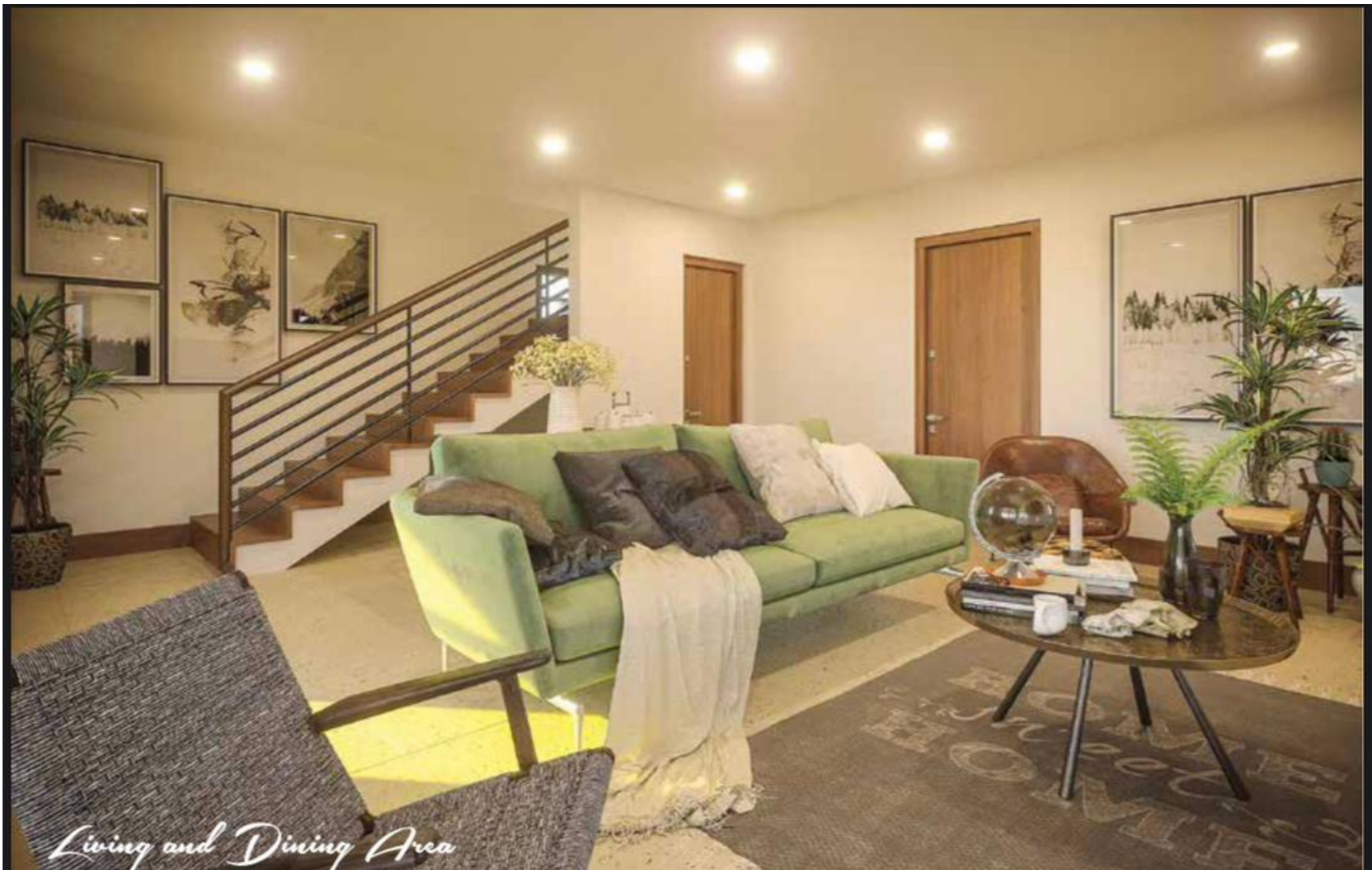
FIRST FLOOR

TYPE D

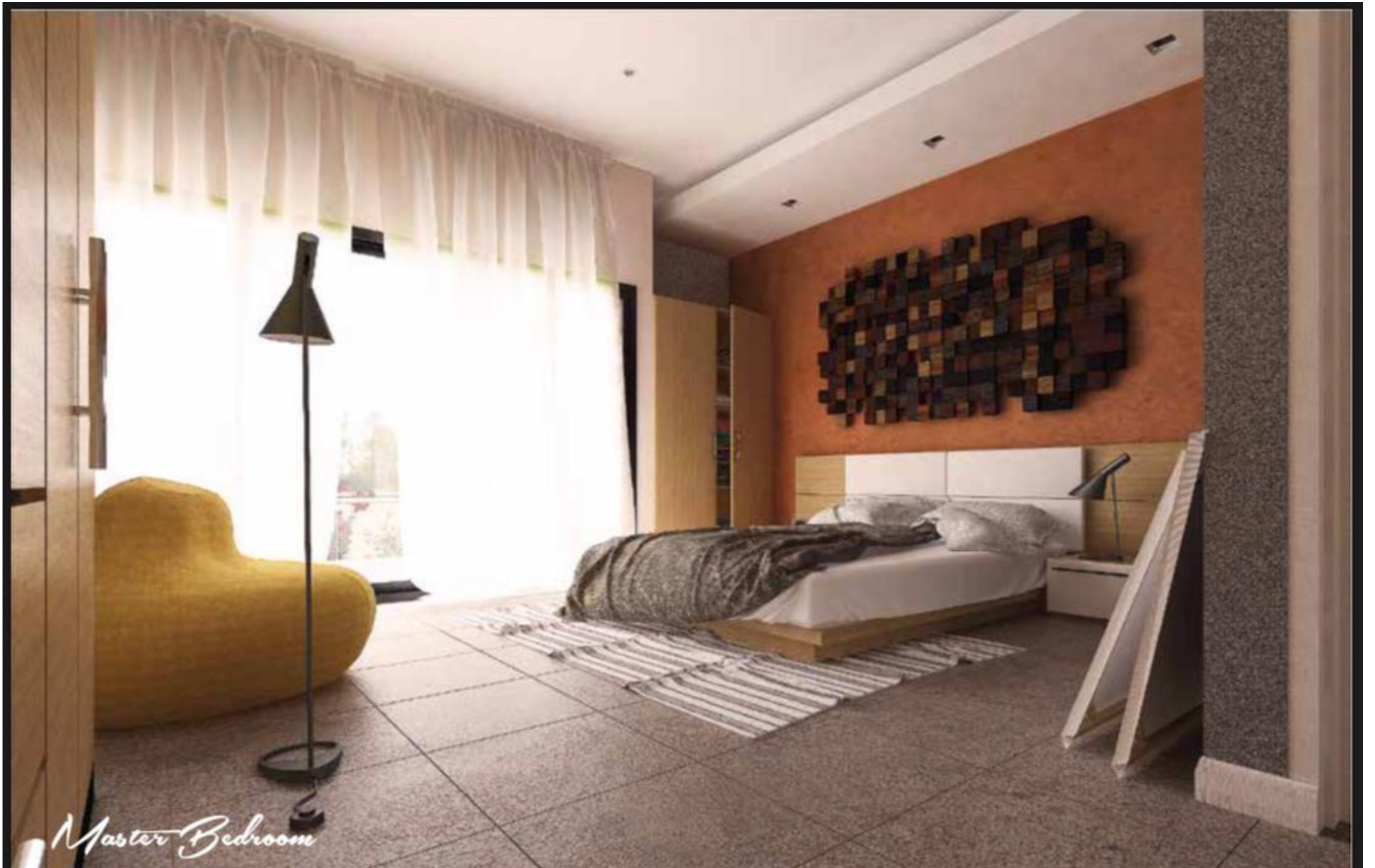




*Discover True Comfort*



*Living and Dining Area*



*Master Bedroom*





*Discover True Comfort*



*Swimming pool Areas*  
**ADAMS GREY**

## Pricing & Payment Plans

House No.11 261SQM <b>SOLD</b>	House No.12 175SQM <b>SOLD</b>	House No.13 175SQM <b>\$200K</b>	House No.14 175SQM <b>\$200K</b>	House No.15 175SQM <b>SOLD</b>	House No.16 175SQM <b>\$200K</b>	House No.17 145SQM <b>\$150K</b>	House No.18 145SQM <b>SOLD</b>	House No.19 145SQM <b>SOLD</b>	House No.20 145SQM <b>SOLD</b>
--------------------------------------	--------------------------------------	--	--	--------------------------------------	--	--	--------------------------------------	--------------------------------------	--------------------------------------

House No.10 261SQM <b>SOLD</b>	<table border="1"> <thead> <tr> <th>Option 1</th> <th>Option 2</th> <th>Option 4</th> </tr> </thead> <tbody> <tr> <td> <p>Standard Payments</p> <p><i>25% down payment</i></p> <p><i>25% deposit by 3 Month</i></p> <p><i>25% deposit by 6 Month</i></p> <p><i>25% deposit by 12 Month</i></p> </td> <td> <p>Flexi Payments</p> <p><i>50% down payment</i></p> <p><i>50% balance spread over 12 Months</i></p> </td> <td> <p>Mortgage Payments</p> <p><i>30% down payment</i></p> <p><i>70% balance by Mortgage.</i></p> </td> </tr> </tbody> </table>			Option 1	Option 2	Option 4	<p>Standard Payments</p> <p><i>25% down payment</i></p> <p><i>25% deposit by 3 Month</i></p> <p><i>25% deposit by 6 Month</i></p> <p><i>25% deposit by 12 Month</i></p>	<p>Flexi Payments</p> <p><i>50% down payment</i></p> <p><i>50% balance spread over 12 Months</i></p>	<p>Mortgage Payments</p> <p><i>30% down payment</i></p> <p><i>70% balance by Mortgage.</i></p>
Option 1	Option 2	Option 4							
<p>Standard Payments</p> <p><i>25% down payment</i></p> <p><i>25% deposit by 3 Month</i></p> <p><i>25% deposit by 6 Month</i></p> <p><i>25% deposit by 12 Month</i></p>	<p>Flexi Payments</p> <p><i>50% down payment</i></p> <p><i>50% balance spread over 12 Months</i></p>	<p>Mortgage Payments</p> <p><i>30% down payment</i></p> <p><i>70% balance by Mortgage.</i></p>							
House No.9 261SQM <b>SOLD</b>									

House No.8 261SQM <b>SOLD</b>	House No.7 261SQM <b>SOLD</b>	House No.6 261SQM <b>SOLD</b>	House No.5 212SQM <b>SOLD</b>	House No.4 175SQM <b>SOLD</b>	House No.3 175SQM <b>SOLD</b>	House No.2 145SQM <b>SOLD</b>	House No.1 145SQM <b>SOLD</b>	<b>POOL</b>
-------------------------------------	-------------------------------------	-------------------------------------	-------------------------------------	-------------------------------------	-------------------------------------	-------------------------------------	-------------------------------------	-------------

# East Legon Hills | LOCATION



**ADAMS GREY**